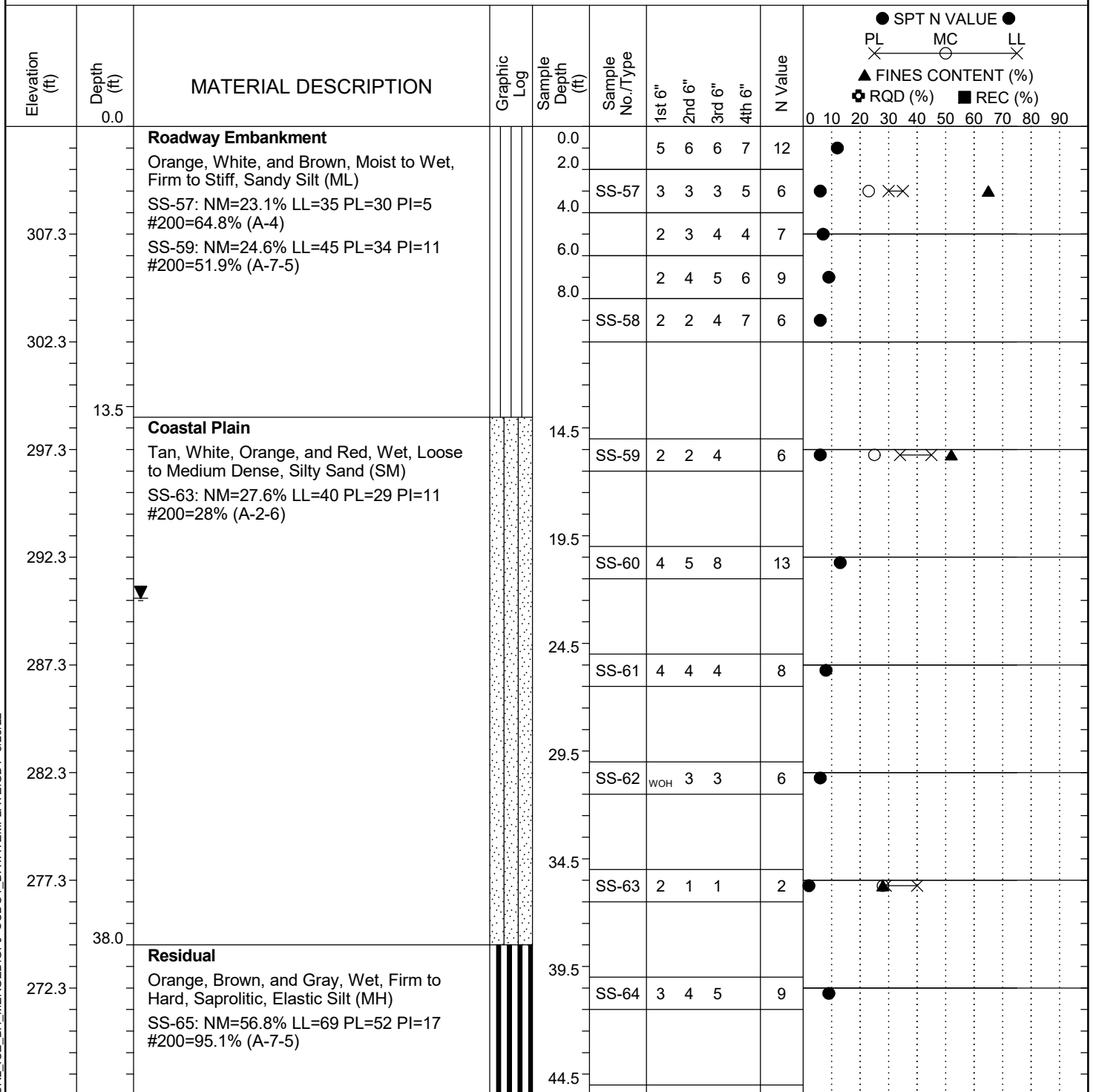


Project ID:	P039719				County:	Richland			Boring No.:	G-115	
Site Description:	Carolina Crossroads Phase 2								Route:	Ramp	
Eng./Geo.:	C. McIlroy		Boring Location:	398+00		Offset:	23 LT		Alignment:	RAMPF	
Elev.:	312.3 ft		Latitude:	34.03960702		Longitude:	-81.09548966		Date Started:	5/4/2022	
Total Depth:	70.8 ft		Soil Depth:	70.8 ft		Core Depth:	N/A ft		Date Completed:	5/4/2022	
Bore Hole Diameter (in):	2.25		Sampler Configuration			Liner Required:	Y (N)		Liner Used:	Y (N)	
Drill Machine:	D-50 #439		Drill Method:	RW		Hammer Type:	Automatic		Energy Ratio:	90.8%	
Core Size:	N/A		Driller:	R. Cassell		Groundwater:	TOB	N/A		24HR	21.9 ft



LEGEND

Continued Next Page

SAMPLER TYPE		DRILLING METHOD	
SS - Split Spoon	NQ - Rock Core, 1-7/8"	HSA - Hollow Stem Auger	RW - Rotary Wash
UD - Undisturbed Sample	CU - Cuttings	CFA - Continuous Flight Augers	RC - Rock Core
AWG - Rock Core, 1-1/8"	CT - Continuous Tube	DC - Driving Casing	